



**Community**

DISTRIBUTED DESIGN SERIES



## DISTRIBUTED DESIGN | TRUE COAXIAL CEILING LOUSPEAKERS

Designed for exceptionally high quality sound with very wide, uniform coverage, the Distributed Design Series debuts Community's innovative **Drop-Stop™** and **Twist-Assist™** features, making the installation process easier and faster.

### COMPREHENSIVE LINEUP

Distributed Design is comprised of seven competitively priced products, including five full-range, standard-depth back can models ranging from a 4.5-inch to 10-inch system, a low-profile shallow back can model for installations where available depth is limited, and a 200-watt 10-inch subwoofer that provides powerful LF reinforcement.

### TIME-SAVING INSTALLATION FEATURES

Drop-Stop™ and Twist-Assist™ are unique features designed to aid installation and reduce labor time. Drop-Stop's spring-loaded legs support the back can on the included rails and C-Ring, so that the installer no longer needs to hold the can against the tile while tightening the clamps. Twist-Assist performs a similar function for the baffle assembly; when the loudspeaker back cans are pre-installed into a conduit system for termination at a later date, a simple twist of the baffle into the back can brings the Twist-Assist clips together, supporting the baffle assembly while the installer fastens the screws.

### WIDE, CONSISTENT DISPERSION

Each of the six full-range models is a true coaxial loudspeaker, with a compression driver concentrically located so that the high frequencies emerge through the center of the low frequency driver's magnetic structure and cone via a precisely contoured **Tru-Phase™** HF waveguide. This special construction provides consistent, wide dispersion up to 16 kHz, all but eliminating high-frequency beaming. Further pattern improvement is achieved by precisely mounting the low frequency driver (and its concentric HF driver) in the center of the baffle, as contrasted to the offset designs used by others.

### INNOVATIVE DESIGN

Most ceiling loudspeakers typically have a half-inch or greater 'step' in their baffle where the grille is attached, and the low frequency driver is rear-mounted behind the grille plate. Such designs produce unwanted reflections and diffraction effects such as frequency response peaks and nulls, polar irregularities and phase response anomalies. The Distributed

Design Series features baffles that are very close to the grille, less than 1/8-inch away. The loudspeaker baffle and ceiling thus form an uninterrupted planar surface for diffraction-free HF driver acoustic loading and a smooth, predictable pattern. This makes it easy to lay out the loudspeaker installation for optimum coverage without unwanted dead zones or intensified overlaps.

### HIGH SENSITIVITY AND MAXIMUM OUTPUT

Compared to similar models by other manufacturers, Distributed Design loudspeaker systems have 3 dB to 5 dB greater input sensitivity and 3 dB to 10 dB higher output level. Higher sensitivity provides more headroom with a given size amplifier, lowering distortion and increasing loudspeaker life expectancy. It also allows use of an amplifier with half to a quarter the power, thus reducing overall installed system cost.

### HIGHER POWER AUTOFORMERS

The D8, D10, and D10SUB have higher power autoformers than the transformers used in other brands, allowing the full loudspeaker output to be realized with 70V or 100V distribution lines. All models in this series accommodate 8-ohm as well as 70V/100V applications.

### VERY LOW DISTORTION

In addition to high sensitivity and power handling which help reduce distortion by avoiding amplifier-induced transient clipping and overdrive, the Distributed Design Series uses Community's patented **Carbon Ring Cone Technology**, true compression drivers, and **Tru-Phase™** waveguides that, together, deliver exceptionally low distortion. In fact, it's the lowest of any competitive loudspeakers in this price range.

### FLAT FREQUENCY RESPONSE, SIMILAR VOICING

The Distributed Design Series was carefully designed so that the six full-range models sound similar when played next to one another with minimal tonal variations. Thus you can mix and match models in one installation and still achieve a uniform sound quality.

### OUTSTANDING SPEECH INTELLIGIBILITY

Taken together, the flat frequency response, low distortion, uniform dispersion (with low reflection and diffraction), and high sensitivity/headroom of Distributed Design yield improved speech intelligibility.



Drop-Stop™ installation tabs lend a hand by providing spring-loaded legs which support the back can on the included rails and C-Ring so that the installer no longer needs to hold the can while tightening the mounting clamps.



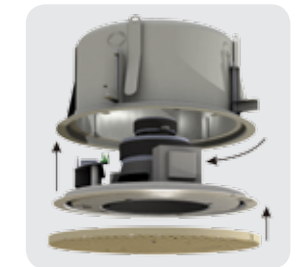
The included Tile Bridge Support Rails and snap-on C-Ring Support Plates prevent sag and secure enclosures to drop or drywall ceilings. The rails transfer the weight of the loudspeaker assembly onto the ceiling grid to prevent sag, while not obstructing adjacent tiles.



3/4-inch and one-inch knock-outs on the sides of the back can and plug-in wiring facilitate pre-installation. External Loop-through Euroblock Connectors make connecting to the next loudspeaker easy. Because the connection is available on the outside of the enclosure (as well as the inside), other loudspeakers in the system are not affected if wires come loose from the can.



An integrated Cable Clamp/Rear Cover also serves as a wire clamp and has a conduit knock-out. This connection access plate reduces the need to weave the wires through a conduit-style cable clamp and install the clamp on the rear of the loudspeaker. Wires can simply be laid in and clamped down with the rear cover. This design enabling side exits for the cables also aids in restricting the overall product depth for low profile installations.



All Distributed Design models can be ordered as separate faces and back cans. If the loudspeaker back cans are pre-installed to a conduit system for termination at a later date, Distributed Design's Twist-Assist™ locking system allows the baffle and loudspeaker assembly to be self-supporting while the installer fastens the screws to the can.

## DISTRIBUTED DESIGN | TRUE COAXIAL CEILING LOUDSPEAKERS

### A BETTER FIT IN ANY CEILING

Distributed Design Series loudspeakers fit well in all applications. In particular, our D4LP 4.5-inch model is the shallowest ceiling loudspeaker available in its class. Only 3.4 inches deep, the D4LP solves space problems that competing products cannot.

### FACES AND BACK CANS AVAILABLE SEPARATELY

For new construction projects, all models may be ordered as separate face and back can. This feature typically costs more in competitive brands.

### DESIGNED AND BUILT FOR SAFETY

Each back can has three steel hanging tabs designed for redundant support when required for seismic safety. In addition, the loudspeaker and grille assembly are linked by a nylon restraining line and steel safety latch that prevent the grille from accidentally falling yet allow it to be detached purposely with ease. The Distributed Design Series is ETL listed; all models in the series have been tested by ETL to comply with UL1480, UL2043 and CSA60065.

MODEL	D4LP	D4	D5	D6	D8	D10	D10SUB
Ceiling Loudspeaker Type	Full-range, coaxial	Full-range, coaxial	Full-range, coaxial	Full-range, coaxial	Full-range, coaxial	Full-range, coaxial	Subwoofer
Description	4.5-inch low profile	4.5-inch standard	5-inch standard	6.5-inch standard	8-inch standard	10-inch standard	10-inch subwoofer
Low Frequency Driver	LF 1 x 4.5" (114.3mm) with 1" (25.4mm) voice coil	LF 1 x 4.5" (114.3mm) with 1" (25.4mm) voice coil	LF 1 x 5" (127mm) with 1.5" (38.1mm) voice coil	LF 1 x 6.5" (165.1mm) with 1.5" (38.1mm) voice coil	LF 1 x 8" (203.2mm) with 2" (50.8mm) voice coil	LF 1 x 10" (254mm) with 2.5" (63.5mm) voice coil	LF 1 x 10" (254mm) with 2" (50.8mm) voice coil
High Frequency Component	HF 1 x 3/4"	HF 1 x 3/4"	HF 1 x 1"	HF 1 x 1"	HF 1 x 1"	HF 1 x 1.25"	None
Max Input Power Rating (8 ohms, continuous RMS)	60W continuous, 150W program	60W continuous, 150W program	100W continuous, 250W program	100W continuous, 250W program	150W continuous, 375W program	200W continuous, 500W program	200W continuous, 500W program
Operating Range	90 Hz - 18.5 kHz	62 Hz - 18.5 kHz	65 Hz - 22 kHz	65 Hz - 22 kHz	60 Hz - 22 kHz	58 Hz - 22 kHz	42 Hz - 200 Hz
Frequency Response	120 Hz - 16 kHz (±5 dB)	85 Hz - 16 kHz (±5 dB)	80 Hz - 20 kHz (±5 dB)	80 Hz - 20 kHz (±5 dB)	80 Hz - 20 kHz (±5 dB)	75 Hz - 20 kHz (±5 dB)	60 Hz - 160 Hz (±5 dB)
Sensitivity (1W/1m)	92 dB SPL	91 dB SPL	93 dB SPL	94 dB SPL	95 dB SPL	98 dB SPL	93 dB SPL
Maximum Output	110 dB SPL	109 dB SPL	113 dB SPL	114 dB SPL	117 dB SPL	121 dB SPL	116 dB SPL
Nominal Impedance	8 ohms	8 ohms	8 ohms	8 ohms	8 ohms	8 ohms	8 ohms
Nominal -6dB Beamwidth	140° conical	140° conical	130° conical	125° conical	115° conical	100° conical	180° conical
Input Connection	Connector for two pair of 2-wire leads, uninterrupted whether loudspeaker is connected or not	Connector for two pair of 2-wire leads, uninterrupted whether loudspeaker is connected or not	Connector for two pair of 2-wire leads, uninterrupted whether loudspeaker is connected or not	Connector for two pair of 2-wire leads, uninterrupted whether loudspeaker is connected or not	Connector for two pair of 2-wire leads, uninterrupted whether loudspeaker is connected or not	Connector for two pair of 2-wire leads, uninterrupted whether loudspeaker is connected or not	Connector for two pair of 2-wire leads, uninterrupted whether loudspeaker is connected or not
Internal Connection	Euroblock Quick Disconnect	Euroblock Quick Disconnect	Euroblock Quick Disconnect	Euroblock Quick Disconnect	Euroblock Quick Disconnect	Euroblock Quick Disconnect	Euroblock Quick Disconnect
Available 70V Taps	30W, 15W, 7.5W, 3.75W	30W, 15W, 7.5W, 3.75W	60W, 30W, 15W, 7.5W	60W, 30W, 15W, 7.5W	120W, 60W, 30W, 15W	200W, 100W, 50W, 25W	200W, 100W, 50W, 25W
Available 100V Taps	30W, 15W, 7.5W	30W, 15W, 7.5W	60W, 30W, 15W	60W, 30W, 15W	120W, 60W, 30W	200W, 100W, 50W	200W, 100W, 50W
Low Impedance	8 ohms	8 ohms	8 ohms	8 ohms	8 ohms	8 ohms	8 ohms
Grille	Powder coated steel with metal safety clip, white finish	Powder coated steel with metal safety clip, white finish	Powder coated steel with metal safety clip, white finish	Powder coated steel with metal safety clip, white finish	Powder coated steel with metal safety clip, white finish	Powder coated steel with metal safety clip, white finish	Powder coated steel with metal safety clip, white finish
Enclosure	Corrosion-resistant zinc plated steel	Corrosion-resistant zinc plated steel	Corrosion-resistant zinc plated steel	Corrosion-resistant zinc plated steel	Corrosion-resistant zinc plated steel	Corrosion-resistant zinc plated steel	Corrosion-resistant zinc plated steel
Knock-out Strain Relief (Qty)	1	3	3	4	4	4	4
Mounting Rigging Points (Qty)	3	3	3	4	4	4	4
Face Clips (Qty)	3	3	3	4	4	4	4
Included Accessories	C-Ring support plate, loudspeaker grille, tile support bridge rails, paint mask, cutout template, flat screwdriver	C-Ring support plate, loudspeaker grille, tile support bridge rails, paint mask, cutout template, flat screwdriver	C-Ring support plate, loudspeaker grille, tile support bridge rails, paint mask, cutout template, flat screwdriver	C-Ring support plate, loudspeaker grille, tile support bridge rails, paint mask, cutout template, flat screwdriver	C-Ring support plate, loudspeaker grille, tile support bridge rails, paint mask, cutout template, flat screwdriver	C-Ring support plate, loudspeaker grille, tile support bridge rails, paint mask, cutout template, flat screwdriver	C-Ring support plate, loudspeaker grille, tile support bridge rails, paint mask, cutout template, flat screwdriver
Optional Accessories	D45-FAR Face Adapter Ring D45-CATR Can Adapter/Trim Ring D45-NCB New Construction Bracket	D45-FAR Face Adapter Ring D45-CATR Can Adapter/Trim Ring D45-NCB New Construction Bracket	D45-FAR Face Adapter Ring D45-CATR Can Adapter/Trim Ring D45-NCB New Construction Bracket	D6-FAR Face Adapter Ring D6-CATR Can Adapter/Trim Ring D6-NCB New Construction Bracket	D8-NCB New Construction Bracket	D10-NCB New Construction Bracket	D10-NCB New Construction Bracket
Safety Agency Rating	ETL listed to comply with UL1480, UL2043 and CSA60065	ETL listed to comply with UL1480, UL2043 and CSA60065	ETL listed to comply with UL1480, UL2043 and CSA60065	ETL listed to comply with UL1480, UL2043 and CSA60065	ETL listed to comply with UL1480, UL2043 and CSA60065	ETL listed to comply with UL1480, UL2043 and CSA60065	ETL listed to comply with UL1480, UL2043 and CSA60065
Dimensions	9.528" (242 mm) bezel diameter 3.638" (92.4 mm) deep	9.528" (242 mm) bezel diameter 6.827" (173.4 mm) deep	9.528" (242 mm) bezel diameter 6.827" (173.4 mm) deep	11.024" (280 mm) bezel diameter 6.827" (173.4 mm) deep	12.992" (330 mm) bezel diameter 8.205" (208.4 mm) deep	14.961" (380 mm) bezel diameter 9.977" (253.4 mm) deep	14.961" (380 mm) bezel diameter 9.977" (253.4 mm) deep
Cutout Diameter	8.75" (222 mm)	8.75" (222 mm)	8.75" (222 mm)	10.25" (260 mm)	12.25" (311 mm)	14.125" (359 mm)	14.125" (359 mm)
Weight	6.6 lbs (3 kg)	7.6 lbs (3.4 kg)	10.4 lbs (4.7 kg)	11.1 lbs (5 kg)	16.4 lbs (7.4 kg)	23.1 lbs (10.5 kg)	24.8 lbs (11.2 kg)





## DISTRIBUTED DESIGN | TRUE COAXIAL PENDANT LOUDSPEAKERS

The Distributed Design DP6 is a high performance 6.5-inch pendant loudspeaker designed for open architecture spaces or any location where a stylish pendant form factor is desired. Featuring high power handling, high sensitivity and realistic sound reproduction, the DP6 can be used in a wide variety of speech and music applications. It is equipped with a built-in autoformer, allowing the full loudspeaker output to be realized with 70V or 100V distribution lines.

Uniform voicing means that the DP6 can be combined with other ceiling and surface mount models in the Distributed Design Series without compromising consistency from zone to zone. The genuine coaxial design uses separate magnets for the LF and HF drivers for reduced distortion and industry-leading sensitivity, thereby permitting 3 dB to 6 dB greater output level while requiring half the amplification power of competing products. The proprietary Tru-Phase™ waveguide and perfectly centered driver produce a consistently wide conical polar response up to 16 kHz. Community's patented Carbon Ring Cone Technology™ increases the effective cone area to further reduce distortion while reinforcing the cone for improved durability.

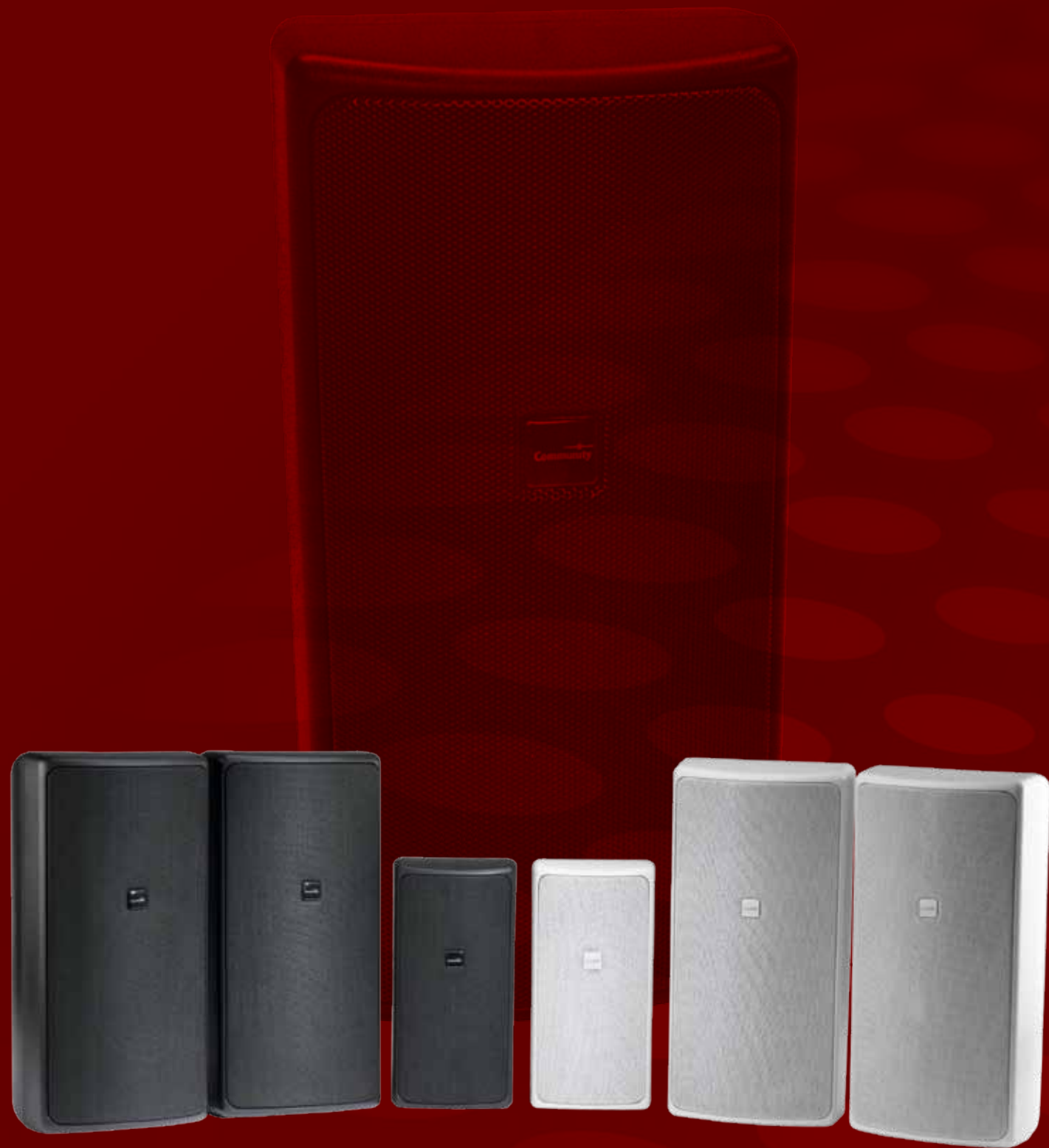
An easy-access selector switch is conveniently located on the face of the loudspeaker for selectable 8 ohm or 70V/100V operation, while an integrated rear cover hides all wiring and hanging hardware for an aesthetically pleasing installation. Two 15-foot (4.5m) long 2mm (0.77") high tensile galvanized steel wire rope suspension cables with integrated spring clips for attaching the cable to the enclosure are included, along with Gripple™ brand adjustable height cable fasteners. Optional accessories include 30ft (9.1m) and 50ft (15.2m) hang kits, a replacement Gripple™ speed clamp and trimmable 14ft (4.3m) decorative split loom tubing.

The powerful and versatile Distributed Design DP6 provides high quality paging and musical performance suitable for retail environments, restaurants, resorts, and numerous other applications where the importance of sonic quality cannot be ignored.

### FEATURES

- Stylish, contoured contemporary pendant design
- Same components and voicing as the Distributed Design ceiling and surface mount loudspeaker family
- Consistent, wide dispersion up to 16 kHz
- True coaxial loudspeakers with HF compression drivers
- Tru-Phase™ high-frequency waveguide
- Patented Carbon Ring Cone Technology™
- High efficiency, high output, high intelligibility, low distortion
- Paintable enclosure constructed of high impact ABS plastic to reduce resonances
- Easy-access power tap switch for selectable 8 ohm or 70V/100V operation
- Integrated rear cover hiding all wires and hanging hardware
- Weather-resistant construction with treated drivers and two-layer powder coated grilles
- ETL listed to comply with ULI480
- Available in standard black or white finishes

MODEL	DP6
Loudspeaker Type	Full-range, coaxial
Drivers	LF 1 x 6.5", HF 1 x 1"
Operating Range (±10 dB)	65 Hz - 22 kHz
Frequency Response	80 Hz - 20 kHz
Max Input Power Rating	100W continuous, 250W program
Sensitivity (1W/1m)	94 dB SPL
Nominal -6 dB Beamwidth	125 degrees conical
Available 70V Taps	60W, 30W, 15W, 7.5W
Available 100V Taps	60W, 30W, 15W
Nominal Impedance	8 ohms
Input Connection	Two 2-position Phoenix connectors
Enclosure	Matte finish ABS, paintable
Finish	Black or white
Included Accessories	Two PHK-15 pendant hang kits; an enclosure ABS plastic rear cover; and a rear cover ingress weather plug
Optional Accessories	PHK-30 30ft (9.1m) pendant hang kit PHK-50 50ft (15.2m) pendant hang kit PSC replacement Gripple™ speed clamp PST-14 trimmable 14ft (4.3m) decorative split loom tubing
Safety Agency Rating	ETL listed to comply with ULI480
Dimensions	14.732 in. (374.2 mm) high enclosure 11.22 in. (285 mm) face diameter
Weight	11.8 lbs (5.4 kg)



## DISTRIBUTED DESIGN | TRUE COAXIAL SURFACE MOUNT LOUDSPEAKERS

Community's architectural Distributed Design Surface Mount Loudspeakers are low profile, compact enclosures with dynamic sound quality and excellent intelligibility. The series consists of the DS5 and DS8 coaxial full-range loudspeakers and the DS8SUB subwoofer system. The full-range models provide high power handling, high sensitivity and realistic sound reproduction while the subwoofer is available for extended low frequency enhancement.

The 5-inch, full-range DS5 is a two-way compact system, ideal for installations where space is a premium. Easily outperforming loudspeakers of a larger size format, the DS5 is ideal for both music and speech applications. For larger installations, the 8-inch DS8 provides higher sound pressure levels, higher sensitivity and greater bass extension. The DS8 also easily outperforms competitive 10-inch format loudspeakers.

The DS-Series is equipped with built-in autoformers, allowing the full loudspeaker output to be realized with 70V or 100V distribution lines. All models accommodate 8-ohm as well as 70V/100V applications with a convenient front-accessible power tap switch hidden behind the rotatable logo.

All DS-Series loudspeakers are elegantly styled in black and white finishes. For durability and improved sonic quality, the cabinets have thick-wall, internally-reinforced ABS plastic construction and two-layer powder coated steel grilles. This high-impact strength construction reduces resonances, and the rounded surfaces further reduce the resonances that occur in flat-sided cabinets.

Installation is simple and flexible using the included Infin-A-Ball™ multi-angle wall mounting bracket which allows low profile mounting and precise positioning of the enclosure over a broad tilt-swivel range. The Infin-A-Ball mounting system also features integrated wiring; that is, the wiring to the enclosure is concealed inside the arm of the bracket with a pre-wired Euroblock connector for a "clean-looking" and aesthetically appealing installation. A separate DS-WMP wall mount plate may also be ordered as an option from Community when specified by local building and safety codes.

With a modern architectural appearance that aesthetically merges well in most environments, combined with weather-resistant capability suitable for indirect outdoor use, the DS-Series can be used in a wide variety of speech and music applications including swimming pools, sports stadiums and facilities, health and fitness clubs, houses of worship, retail environments, cruise ships, educational facilities, corporate A/V, bars and restaurants.

### FEATURES

- Modern architectural design
- Same components and voicing as the Distributed Design Series ceiling and pendant loudspeakers
- High efficiency, high output, high intelligibility, low distortion
- Outperforms competitive loudspeakers of a larger size
- Paintable enclosure constructed of high impact ABS plastic to reduce resonances
- Front-accessible power tap switch for selectable 8 ohm or 70V/100V operation
- Infin-A-Ball™ low profile mounting bracket included
- Weather-resistant construction with treated drivers, two-layer powder coated grilles and protected wiring ingress
- Conforms to Mil Spec 810
- IP55 rated loudspeakers, IP56 rated connector cover
- Available in standard black or white finishes



Pre-wired Euroblock male connector with four screw terminals concealed in the base of the Infin-A-Ball™ bracket for hidden wiring.



Selectable 8 ohm or 70V/100V front-accessible power tap switch hidden behind the logo.



Optional wall mount plate to comply with local building and safety codes.



Vertical or horizontal mounting using the included Infin-A-Ball™ bracket.



Built-in safety cable attachment loop in the rear of the enclosure.

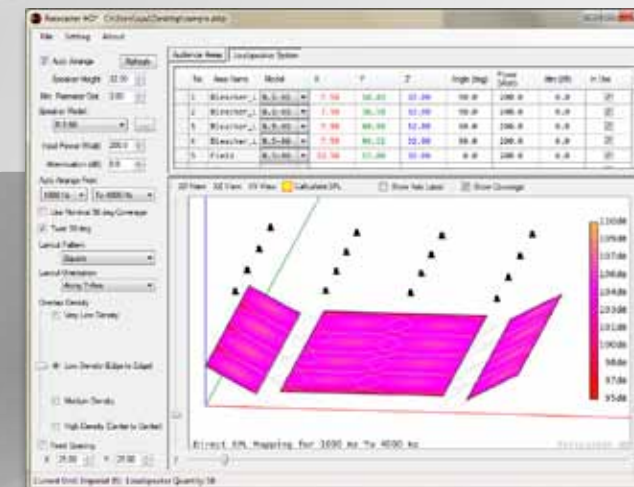


DISTRIBUTED DESIGN | TRUE COAXIAL SURFACE MOUNT LOUDSPEAKERS

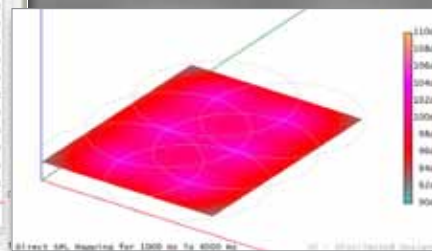


MODEL	DS5	DS8	DS8SUB
Loudspeaker Type	Full-range, coaxial	Full-range, coaxial	Subwoofer
Drivers	LF 1 x 5", HF 1 x 1"	LF 1 x 8", HF 1 x 1.25"	LF 1 x 8"
Operating Range (±10 dB)	65 Hz - 22 kHz	60 Hz - 22 kHz	42 Hz - 200 Hz
Frequency Response	80 Hz - 20 kHz	70 Hz - 20 kHz	60 Hz - 160 Hz
Max Input Power Rating	100W continuous, 250W program	150W continuous, 375W program	200W continuous, 500W program
Sensitivity (1W/1m)	93 dB SPL	95 dB SPL	88 dB SPL
Nominal -6 dB Beamwidth	130 degrees conical	115 degrees conical	180° H x 360° V
Available 70V Taps	60V, 30V, 15V, 7.5V	120V, 60V, 30V, 15V	200V, 100V, 50V, 25V
Available 100V Taps	60V, 30V, 15V	120V, 60V, 30V	200V, 100V, 50V
Nominal Impedance	8 ohms	8 ohms	8 ohms
Enclosure	Matte finish ABS, paintable	Matte finish ABS, paintable	Matte finish ABS, paintable
Finish	Black or white	Black or white	Black or white
Included Accessories	Infin-A-Ball™ mounting bracket with internal wiring	Infin-A-Ball™ mounting bracket with internal wiring	Infin-A-Ball™ mounting bracket with internal wiring
Optional Accessories	DS-WMP wall mount plate	DS-WMP wall mount plate	DS-WMP wall mount plate
Input Connections	4-screw Euroblock connector for two pair of 2-wire leads (uninterrupted whether the loudspeaker is connected or not) concealed in the base of the mounting bracket; and a 2-pin Euroblock connector on the loudspeaker enclosure		
Environmental	IP55 rated loudspeakers - IP56 rated connector cover - designed to Mil Spec 810		
Dimensions (H x W x D) (excluding Infin-A-Ball™ bracket)	12.9" x 6.3" x 7.5" 328 mm x 160 mm x 191 mm	18.5" x 9" x 10.1" 470 mm x 230 mm x 257 mm	18.5" x 9" x 10.1" 470 mm x 230 mm x 257 mm
Weight (without bracket)	10.3 lbs (4.7 kg)	17.6 lbs (8 kg)	23.2 lbs (10.5 kg)

Notes: (1) Sensitivity: On-wall pink noise measurement at 6ft (1.8m) at 10% power; extrapolated to 1 meter and an input of 2.83 volts RMS.  
(2) All wattage figures are calculated using the rated nominal impedance.



**FORECASTER HD**  
Ceiling Distributed System Software



**FORECASTER HD** is our proprietary, easy-to-use engineering tool which provides general design suggestions for distributed systems. This free utility program helps select the proper model and quantity of Community loudspeakers for various distributed applications based on user input of room dimensions and listening height. Sloped listening areas and ceilings can also be modeled using the software, while projects and mappings can be saved, recalled and shared.

layout pattern among different designs to achieve the required performance and goals of the sound system. FORECASTER HD also allows high resolution screen shots of loudspeaker layouts, direct SPL mapping and layout dimensional information to be easily exported for client presentations or for the installation team's reference. This calculator includes advanced tools to provide a high degree of engineering precision.

The user can quickly compare the loudspeaker type, density and

Designers can download Community's FORECASTER HD for free from [www.communitypro.com](http://www.communitypro.com).



**Community Professional Loudspeakers**

333 East 5th Street  
Chester, PA 19013-4511 USA  
Phone (610) 876-3400  
Fax (610) 874-0190  
[info@communitypro.com](mailto:info@communitypro.com)

**[communitypro.com](http://communitypro.com)**